



Coonamble Public School



Wednesday 9th May 2018

Term 2 Week 2

We acknowledge the school is built on Wailwan land and the home to many Gamilaroi families.



Dates for the Calendar

- 11/05/2018 - Mothers Day Assembly and Morning Tea
- 11/05/2018 - P&C Mothers Day Stall
- 11/05/2018 - BOOK CLUB DUE
- 15/05/2018 - CPS Cross Country
- 16/05/2018 - Wednesday - SHOW HOLIDAY
- 17/05/2018 - **NAPLAN** - Language, Writing
- 18/05/2018 - **NAPLAN** reading
- 18/05/2018 - Walk Safely to School Day
- 21/05/2018 - **NAPLAN** - Numeracy
- 28/05/2018 - PUPIL FREE DAY

2018 Attendance Target

Week
1
87%

OUR
GOAL
94%

COONAMBLE PUBLIC
SCHOOL INVITES MOTHERS/
GRANDMOTHERS/CARERS
TO;

Mothers Day Morning Tea

Friday 11th
May 2018

ASSEMBLY 10.45 FOLLOWED
BY MORNING TEA IN THE
COMMUNITY ROOM FOR
YOU AND YOUR CHILDREN

Attention Parents/Carers!!

If you have changed your address or
phone number please advise the office
and update your details ASAP

From the Principal.....

Dear parents,

The school remembered our community who went to war on Friday in a lovely service around our flag poles. It was good that the weather was kind to us this year and we could all sit outside. We would like to thank:

- all the families and friends who attended
- Mr Schmierer and Miss Hughes for their coordination of the event,
- SRC students for leading the service – they were respectful and knew their roles and lines well,
- Mr Kuz for training the choir and the music coordination,
- the choir and band for an outstanding performance of the Anzac song- it was very moving and well rehearsed. The musical talent of our students is improving all the time and the fact that students are confident to sing solo/duets in front of a large crowd is a great credit to their commitment to learn and Mr Kuz's training,
- Ms Julie Tym for her haunting rendition of the Last Post and the Rouse on the trumpet. It is always special to have an authentic trumpeter rather than taped music and we appreciate the high school releasing Julie to play for us,
- Mr Bob Ellis for his address to the assembly about his experience and knowledge of serving his country and
- every student and teacher for the amazing effort and quality of the class wreaths that were laid. It was quite an effort in a week when show art is also being finalised and all classes laid a very special and respectful wreath.

Students bringing personal items to school

I would like to remind all students and their families that valuables including toys should not be brought to school. We cannot be responsible when personal items are lost or stolen at school and it is difficult to resolve the issues around this.

If children want to bring an item for news or to show in class for a specific reason, please organise it with the teacher beforehand and either come in with your child and then take it home or arrange for the teacher to lock it away during the day.

Balls for soccer, football or netball cannot be brought from home. The school has balls for all games and sport and students are to use these when playing. Students **do** bring their own handballs.

Personal items cannot be traded or "sold" to other students at school. Students keep their own property and spend any money that parents give them for the purpose it was given e.g. at the canteen.

We would appreciate it if parents could talk to their children about these things and help them understand why this is the rule at school.

Connecting To Country

Last Thursday all staff (including non teaching) from Primary School & High School travelled to Brantwood to learn about the ancient Aboriginal burial site discovered by George Greenaway in 2014 while clearing a field. It was very fascinating and staff were given knowledge and information about Aboriginal culture and particularly traditions of respect and care for those who have passed. We also participated in a cleansing ceremony.

Our next session will be held in the yarning circle at our school and we will share a meal followed by studying the night sky through telescopes and learning about the Aboriginal understanding of the stars.

It is wonderful that all staff at both schools can join together to learn more about the Aboriginal culture in general but particularly the Coonamble local traditions. Many thanks to the Senior Leaders in each school, The AECG and local residents who have contributed to make our experiences authentic and meaningful.

STUDENTS WILL NOT ATTEND SCHOOL ON MONDAY 28th MAY 2018. IT IS OUR STAFF DEVELOPMENT DAY. Teachers will be at school learning strategies to support and manage aggressive and potentially aggressive behaviour. All staff including non teaching SLSOs, general assistants and office staff will participate in the training.

We know that some families will need to make arrangements for students to accommodate this change. Please advise me if you have any concerns about this or require assistance.

Buses have been notified of the change.

I welcome parents with concerns, questions and issues to contact me so that I can explain or resolve issues quickly. It is difficult to resolve issues if I am unaware of them. Our school welcomes input and involvement of parents on many levels.

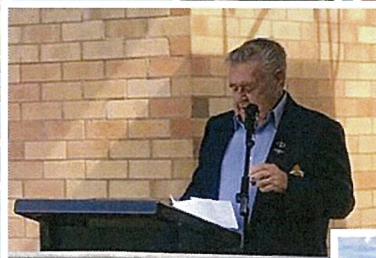
Have a great week

Annette
Annette Thomson
Principal

Peachey Richardson Shield 2018



CPS Anzac Ceremony





FRIDAY 18 MAY 2018

ACTIVE KIDS ARE SMARTER KIDS

National Walk Safely to School Day (WSTSD) is on Friday 18 May 2018. Now in its 19th year, it is a campaign and annual event when all primary school children, their parents and carers are encouraged to walk and commute regularly and safely to school. It is a community event seeking to promote Road Safety, Health, Public Transport and the Environment.

Australian children are becoming less active. One substantial contributor is the decline in walking and/or taking public transport to school. Children who are regularly physically active are healthier, perform better academically and less likely to be obese or overweight, which can lead to the long-term and costly risks of heart disease and diabetes etc. Walking regularly is the best exercise because you can build it into your daily routine.

The Objectives of National Walk Safely to School Day are:

- To encourage parents and carers to walk to school with primary school age children
- To promote the health benefits of walking and create regular walking habits
- To help children develop vital road crossing skills and ensure children up to the age of 10 years hold an adult's hand when crossing the road
- To help children develop the vital road-crossing skills they will need as they become mature pedestrians
- To reduce car dependency and traffic congestion
- To reduce the level of air pollution created by motor vehicles
- To promote the use of public transport

How your School and Council can be involved (detailed information is at walk.com.au):

Enclosed is the WSTSD kit which contains stickers and posters for school and council noticeboards. We ask that every student wears a sticker on the day to help promote this important community event. Other ideas include:

- Use the teachers' tool-kit and publish our information in your school's newsletter
- Display the poster on your noticeboard and around school (print more from our web-site)
- Print and colour in the online poster
- Ask your P&C and council to help promote and support the campaign and event
- Host a Healthy Breakfast (ask your P&C, council and local businesses to sponsor a breakfast at your school)
- Tell your parents, friends, carers, teachers and local businesses about the event
- Encourage parents or carers who have to drive, to park at least 1km away and walk to school
- Register your school as a WSTSD Ambassador and assist with publicity
- Complete the online questionnaire
- Find us on Facebook, Instagram and Twitter

Thank you for your support and participation.
Pedestrian Council of Australia



Until they're ten, children must always hold an adult's hand when crossing the road

WALK.COM.AU



SUPPORTED BY THE AUSTRALIAN GOVERNMENT AND ALL STATE, TERRITORY AND LOCAL GOVERNMENTS



Friday 18th May

- West side - 8.20am meeting **Mrs Gray** at the SES Headquarters in Aberford Street
- East side - 8.20am meeting **Mrs Parsons** at Smith Park netball courts

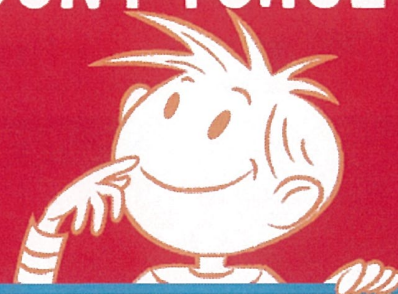
We will then all meet at the Coonamble Swimming Pool and finish the walk to school together. Parents/Carers and other family members are all welcome to come along.



Attention Parents/Carers!!

If you have changed your address or phone number please advise the office and update your details ASAP

DON'T FORGET!



SCHOLASTIC

Book Club

orders are due:

Friday 11th May

P&C News



P & C
Mothers Day Stall

Friday 11th May
2018

Canteen area - Gifts available ranging from \$1 - \$5

Community News

Marthaguy Picnic Races

SATURDAY 12 MAY - Gates Open 11am

- Free Lucheon - first 100
- Free Mother's Day Hamper Draw
- Fashions on the Field

FREE FACE
PAINTING &
JUMPING CASTLE



it's Show Time!

COONAMBLE SHOW
15TH -16TH MAY 2018

FIRST CLASS
ENTERTAINMENT
SPECTACTULAR



CHECK OUT OUR
FACEBOOK PAGE
FOR A PREVIEW!

SCHEDULES NOW AVAILABLE FROM
GOOD FOOD BASKET

www.coonambleshows.com



School Uniform Update!

We have been advised that our order of shirts will arrive early next week.
Pre-orders will be filled first.

Community News

CANTEEN MANAGERS AND STAFF
ARE INVITED TO ATTEND A...

NSW HEALTHY SCHOOL CANTEEN WORKSHOP

BROKEN HILL
The Demo Club
Wed 6 June - 11am-2pm

COONAMBLE
Coonamble Bowling Club
Tues 19 June - 11am-2pm

ORANGE
Orange City Bowling Club
Thurs 21 June - 11am-2pm

DUBBO
Dubbo Golf Club
Mon 18 June - 11am-2pm

PARKES
Parkes Services Club
Wed 20 June - 11am-2pm

BATHURST
Panthers Bathurst
Fri 22 June - 11am-2pm

In 2018, this series of interactive workshops led by a Accredited Practising Dietitian will...
Refresh of knowledge and understanding of the new NSW Healthy School Canteen Strategy

Provide an opportunity for those attending to review their school canteen menu and update it to align with the NSW Healthy School Canteen Strategy. There will be lots of tips and tricks to help out with purchase and supply of healthy food and market a healthy canteen!

Participants who travel more than 100 km one way will be eligible to receive a fuel card.

There are up to \$750 of HOUSE VOUCHERS for canteens to receive as part of a menu check process - details will be provided upon registration!

RSVP
14 May 2018

TO REGISTER COMPLETE AN ONLINE FORM
AT: www.surveymonkey.com/r/wnswcantenworkshop

LUNCH will be provided.
Each canteen will receive a GIFT!

CONTACT

Healthy Children Initiative Team
Western NSW Local Health District
Tel (02) 6809 8970 | Fax (02) 6841 2368
WNSWLHD-HCI@health.nsw.gov.au

NSW
Health
Western NSW
Local Health District



Boarding Schools Expo

NSW EXHIBITORS

Albionville
Ascham School
Barker College
Calrossy Anglican School Tarnworth
Canberra Girls Grammar School
Canberra Grammar School
Cranbrook
Farmer Memorial Agricultural High School
Fremantle
Hurlstone Agricultural High School
Kambala
Kinross-Watson Bay School
Kinross-Watson School
Knox Grammar School
Loretto Normalhurst
Macquarie Anglican Grammar MAGS
New England Girls' School NEGS
Newington College
PLC Armidale
PLC Sydney
Pymble Ladies' College
Ravenwood School for Girls
Red Bend Catholic College
Saint Ignace's College, Riverview
St Ignace's College, Hunters Hill
St Scholastica's College
St Stanislaus' College
St. Ann's Bathurst
Shore
Tara Anglican School for Girls
The Armidale School TAS
The King's School
The Scots College, Sydney
The Scots School Albany
Wenona
Yanco Agricultural High School
Isolated Children's Parents' Assoc. (ICPA NSW)

QLD EXHIBITORS

Anglican Church Grammar School
Brisbane Boys' College
Cayfield College
Dalby State High School
Downlands College
Fairholme College
John Paul College
St Hilda's School
St Joseph's Nudgee College
St Margaret's Anglican Girls School
St Peter's Lutheran College
Somerville House
Stuart House School
The Glenelg School
The Scots PGC College
Toowoomba Anglican College (TACAPS)

VIC EXHIBITORS

Assumption College
Gonzague PGC College
Methodist Ladies' College MLC
St Catherine's School
Scotch College Melbourne
Xavier College

*Check boardingexpo.com.au to see which schools will be at each Expo

Finding the right boarding school is as easy as ABC

A Visit boardingexpo.com.au

B Visit an Expo

C Visit your Shortlist

Free
Admission

2018 EXPOS

DUBBO EXPO Fri 18 May, 12.30 - 6.00pm	Dubbo Convention Centre Sat 19 May, 9.30 - 2.30pm
GRIFFITH POP-UP Thu 14 June 12.30pm - 6.30pm	Griffith Ex-Servicemen's Club
WAGGA WAGGA EXPO Fri 15 June, 12.30 - 6.00pm	Bolton Park Stadium Sat 16 June, 9.30 - 2.30pm
NARRABRI EXPO Fri 27 July, 12.30 - 6.00pm	Crossing Theatre Sat 28 July, 9.30 - 1.30pm

boardingexpo.com.au

awaken youth

STRATEGIES FOR PREVENTION OF YOUTH SUICIDE

SUICIDE PREVENTION TRAINING

for those working with young people & in Gatekeeper Training

Half-Day WORKSHOP

Attendees will examine:

- Current Australian trends and statistics pertaining to child and adolescent suicide
- Protective factors, risk factors and warning signs of suicide to respond appropriately
- Proactive strategies and methods to improve the wellbeing of young people
- Listening, questioning and rapport building skills
- Conducting safe interventions with young people and effective methods of referral

Dates: Friday 22nd June 2018
Time: 1.00pm to 4.00pm
Cost: FREE
Venue: Coonamble Bowling Club, Aberford Street, Coonamble
Catering: Tea and coffee will be provided

To REGISTER contact
Trish Butler, MPREC
0432 730 175
trishb@mprec.org.au

Leading cause of death in young people aged 15 - 25.

Prevention starts by recognising warning signs and taking them seriously.

Book Now PLACES STRICTLY LIMITED

www.awakenyouth.com.au

Sign On

Hand Sign - Communication Gateway

Key Word Sign

New South Wales

KEY WORD SIGN BASIC WORKSHOP (FORMALLY MAKATON)

Learn how to use Key Word Sign, natural gesture and other strategies to communicate with your client or child.

9:00am to 3:30pm, Saturday 30th June 2018
Panthers Bathurst 132 Piper St Bathurst

Presented by: **Meagan Rudd** Dip. Austlan - Key Word Sign NSW presenter & tutor
Meagan has worked in special education at both primary & secondary levels with children & young adults with complex communication difficulties relating to Autism Spectrum Disorder, Down Syndrome & hearing impairment. She also has a Diploma of Auslan.

This workshop covers the use of Key Word Sign and natural gesture to assist individuals who have difficulties with receptive and/or expressive communication.

It is relevant for anyone living or working with a person with communication difficulties such as family members, education and medical professionals, teacher assistants, child care workers & volunteers. No signing experience necessary.

This workshop will enable participants to:

- explain the difference between Key Word Sign, Auslan and Signed English
- competently produce at least 80 signs
- select vocabulary for individual clients
- have an understanding of sign production techniques
- know where to find resources and follow-up support in the use of key word sign and natural gesture
- be eligible to receive a Key Word Sign Basic Workshop certificate from Key Word Sign NSW

Completing the Key Word Sign Basic Workshop will contribute 6 hours of QTC Registered PD addressing 1.2.2, 1.4.2, 1.6.2, 2.1.2, 2.5.2, 4.1.2, from the Australian Professional Standards for Teachers towards maintaining Proficient Teacher Accreditation in NSW.

Tea, coffee, lunch, a copy of "Getting Started with Key Word Sign", (Key Word Sign Australia reference book) and a resource package of presentation notes and reference material, are provided.
Registrations close: Thursday 21st June (Registration is essential as places are limited).
To register, please complete & return the attached registration form.

Fee: \$210 for professionals, or \$150 for family members/guardians of a child or adult with communication difficulties.

For further information, contact Meagan Rudd
P 0410 691 381 E meagan.signon@gmail.com
www.signoncommunication.com.au
Find us on [facebook.com/signoncommunication](https://www.facebook.com/signoncommunication)

WORKSHOPS MAY BE CANCELLED IF LESS THAN 8 PARTICIPANTS ARE REGISTERED

COONAMBLE PUBLIC SCHOOL



PO BOX 322
COONAMBLE NSW 2829
E- primaryschoolpanc@gmail.com PH 02 68222817

CANTEEN MENU & PRICING

DRINKS

WATER (600ML)	\$2.50
WATER (1 LITRE)	\$3.00
PLAIN MILK (150ML)	\$1.50
POP TOPS (200ML)	\$2.50
PRIMER POPPERS (250ML)	\$1.50
FLAVOURED MILK (250ML)	\$2.50

SNACKS

FRESH FRUIT	\$1.50
FRUIT SALAD TUB	SML \$2.00 & LARGE \$3.00
EGGS	\$0.50
CUSTARD	\$1.50
YOGHURT	\$1.50
CUSTARD & JELLY	\$1.50
JELLY	\$1.50
CHEESE & CRACKERS	\$1.00
CHIPS	\$1.50
MUFFIN	\$2.50

FROZEN TREATS

VANILLA ICE CREAM CUP	\$2.30
ICE MONY (TNT)	\$1.00
WATERMELON LEMONADE, COLA, SOUR RASPBERRY	
PADDLE POP	\$2.00
CHOC & RAINBOW	

SALAD TUB

SALAD	\$5.00
SALAD WITH HAM	\$6.00
SALAD WITH CHICKEN	\$6.00
SALAD WITH CHEESE	\$6.00
SALAD WITH EGG	\$6.00

SANDWICHES & WRAPS & SALADS

CHOOSE YOUR BASE

BROWN, GRAIN BREAD, WHITE, WRAP

VEGETMITE	\$2.50
CHEESE	\$2.50
HAM	\$3.00
HAM & CHEESE	\$3.20
HAM & TOMATO & CHEESE	\$3.50
HAM & PINEAPPLE & CHEESE	\$3.50
EGG & LETTUCE	\$3.20
EGG	\$2.50
FRESH CHICKEN	\$3.50
FRESH CHICKEN & CHEESE	\$3.60
FRESH CHICKEN & LETTUCE	\$3.60
CHICKEN & TOMATO & CHEESE	\$4.00
CHICKEN & PINEAPPLE & CHEESE	\$4.50
SALAD	\$4.50
SALAD WITH HAM	\$5.00
SALAD WITH CHICKEN	\$5.50
SALAD WITH CHEESE	\$5.00
SALAD WITH EGG	\$5.00
ADD ANY EXTRA TOPPING	\$0.60

HOT FOOD

CHICKEN BURGER & MAYO	\$5.00
MEAT PIE (LARGE)	\$4.60
SMALL PIES	\$1.60
SAUSAGE ROLL	\$3.60
BEEF LASAGNE	\$4.30
CHICKEN FINGERS	\$0.60
SAUCE	\$0.50

UNIFORMS

SHIRTS	TRACK PANTS	JACKETS	WINTER DRESS	LUNCH BAG
\$30.00	\$40.00	\$30.00	\$60.00	\$11.00
SHORTS	JUMPERS	SUMMER DRESS	BUCKET HAT	LIBRARY/SWIM BAG
\$30.00	\$30.00	\$50.00	\$10.00	\$11.00

IF YOU WOULD LIKE TO VOLUNTEER ONE DAY A WEEK WE
WOULD APPRECIATE YOUR HELP!